

## APPLICATION NOTES FOR STRIPLINE DROP-IN DEVICES

The DROP-IN ferrite isolators and circulators are available in three standard packages and designed for direct integration to stripline or microstrip circuitry. The rugged steel housing provides superior magnetic shielding and through hole mounting. This series is available from 0.6 to 2.2GHz in various bandwidths.

- **Features.**

- Small size, light weight
- Modest design allows for low unit cost
- Custom designs
- Wide range of standard products
- High performance
- Single magnet design
- Lead free and ROHS compliant

- **Quality.**

All products are 100% inspected to exceed MIL-STD-883E.

- **Frequency range.**

- Standard frequency range of 0.6 to 2.2GHz

- **Mechanical mounting.**

- Compatible with 50-ohm adjacent devices

- **Temperature range.**

- Standard temperature range –30 to 65°C, do not heat above 205°C
- Electrical parameters perform at the standard operating temperature range.
- Other temperature ranges are available (Please contact DORADO)

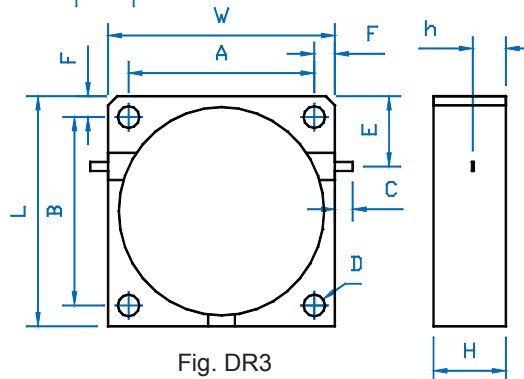
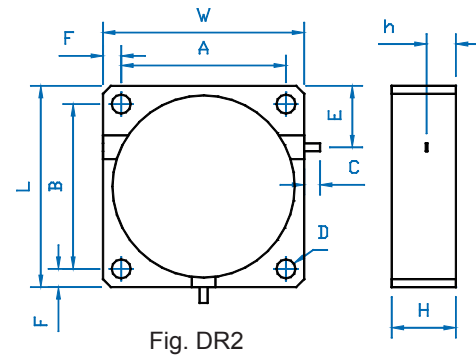
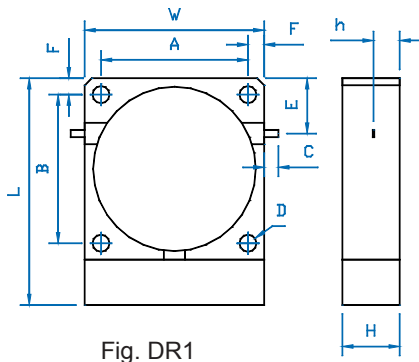
- **Environmental.**

- Operated in waterproof equipment only
- Humidity up to 80% non condensing is acceptable.

## STRIPLINE DROP-IN DEVICES (0.6 TO 2.2GHz)

FREQUENCY (GHz)	ISOLATOR MODEL	CIRCULATOR MODEL	BAND WIDTH (GHz)	INSERTION LOSS (db)	ISOLATION (dB)	VSWR	OUTLINE #
0.600 - 0.725	2IDS70-1A		full	0.6	18	1.3	10.1
0.600 - 0.725		2CDS70-1A	full	0.6	18	1.3	10.2
0.800 - 1.600	2IDS(xx)-1A		0.04	0.3	22	1.2	10.1, 10.3
0.800 - 1.600		2CDS(xx)-1A	0.04	0.3	22	1.2	10.2, 10.4
0.800 - 1.600	2IDS(xx)-2A		0.08	0.5	20	1.3	10.1, 10.3
0.800 - 1.600		2CDS(xx)-2A	0.08	0.5	20	1.3	10.2, 10.4
1.600 - 2.200	3IDS(xx)-1A		0.05	0.3	22	1.2	10.5, 10.7
1.600 - 2.200		3CDS(xx)-1A	0.05	0.3	22	1.2	10.6, 10.8
1.600 - 2.200	3IDS(xx)-2A		0.1	0.5	20	1.3	10.5, 10.7
1.600 - 2.200		3CDS(xx)-2A	0.1	0.5	20	1.3	10.6, 10.8
1.700 - 2.000	3IDS18-2A		full	0.5	20	1.3	10.5, 10.7
1.700 - 2.000		3CDS18-2A	full	0.5	20	1.3	10.6, 10.8
1.800 - 2.200	3IDS19-A		full	0.7	18	1.3	10.5, 10.7
1.800 - 2.200		3CDS19-2A	full	0.7	18	1.3	10.6, 10.8

OUTLINE #	DIMENSIONS. mm										Fig.
	W	L	A	B	C	D	E	F	h	H (max)	
10.1	25.40	31.75	20.8	20.8	3.8	2.40	7.60	2.30	3.7	8.10	DR1
10.2	25.40	25.40	20.8	20.8	3.8	2.40	7.60	2.30	3.7	8.10	DR2
10.3	25.40	25.40	20.8	20.8	3.8	2.95	7.60	2.30	3.8	6.35	DR3
10.4	25.40	25.40	20.8	20.8	3.8	2.95	7.60	2.30	3.8	6.35	DR2
10.5	19.05	25.40	14.5	14.5	2.0	2.40	6.22	2.28	3.0	8.10	DR1
10.6	19.05	19.05	14.5	14.5	2.0	2.40	6.22	2.28	3.0	8.10	DR2
10.7	19.05	25.40	14.5	14.5	2.0	M1.60	6.22	2.28	3.0	8.10	DR1
10.8	19.05	19.05	14.5	14.5	2.0	M1.60	6.22	2.28	3.0	8.10	DR2



(xx) IDENTIFIES THE CENTER OF FREQUENCY OF THE DEVICE INT GHz.