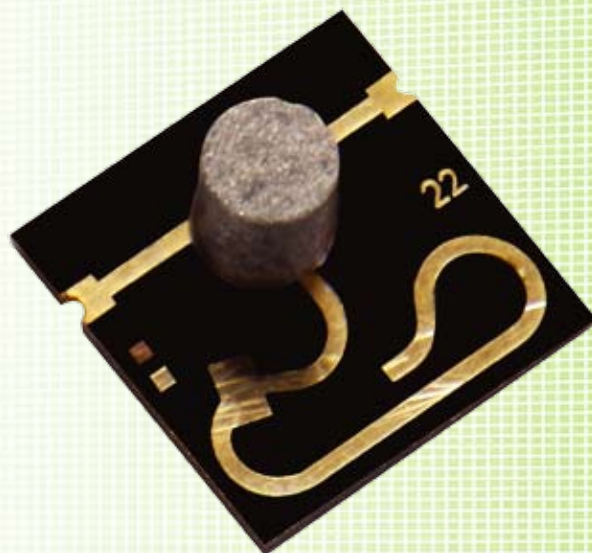


SURFACE MOUNT MICROSTRIP MILLIMETER WAVE ISOLATORS & CIRCULATORS

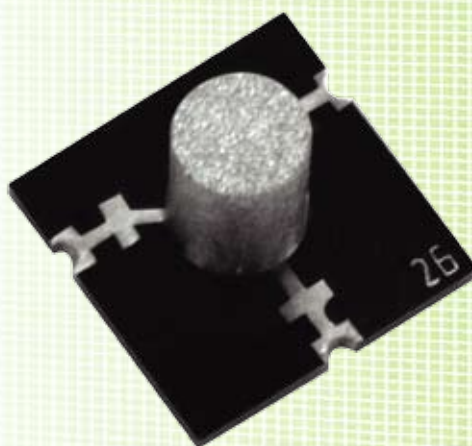
FEATURES

- Low Profile
- Standard Reflow Processing
- Pick & Place Automation
- Low Cost
- High Performance
- ROHS Compliant



SPECIFICATIONS

Frequencies:	17.7 to 19.7 GHz 21.1 to 23.6 GHz 25.0 to 27.0 GHz 18.0 to 30.0 GHz @ 7% Bandwidth
Insertion Loss:	1.1 dB (max)
Isolation:	18.0 dB (max)
VSWR:	1.30 (max)
Temperature:	-30° to + 65°C
Operating Power:	1.0 W
Size:	<i>Custom designs available</i>



FREQ. RANGE (GHz)	ISOLATOR MODEL	CIRCULATOR MODEL	INS. LOSS dB (MAX)	ISOLATION dB (MIN)	VSWR (MAX)	FORWARD POWER (W)	LOAD POWER (W)	OPERATING TEMP. RANGE	OUTLINE #
17.70-19.70	4IMG19-1		1.10	18	1.30	1	1	-30° to +70° C	SM2
17.70-19.70		4CMG19-1	1.10	18	1.30	1		-30° to +70° C	SM3
21.20-23.60	4IMG22-1		1.10	18	1.30	1	1	-30° to +70° C	SM2
21.20-23.60		4CMG22-1	1.10	18	1.30	1		-30° to +70° C	SM3
25.20-27.00	4IMG26-1		1.10	18	1.30	1	1	-30° to +70° C	SM4
25.20-27.00		4CMG26-1	1.10	18	1.30	1		-30° to +70° C	SM5

OUTLINE #	W, mm	L, mm	H, mm	E, mm	PCB property Thickness, mm	PCB property Dk@1MHz	Fig
SM2	6.00	6.00	3.50	1.50	0.127 (0.005")	2.2±5%	A
SM3	6.00	6.00	3.50	1.50	0.127 (0.005")	2.2±5%	B
SM4	5.00	7.00	3.50	1.35	0.127 (0.005")	2.2±5%	A
SM5	4.00	4.00	3.50	1.20	0.127 (0.005")	2.2±5%	B

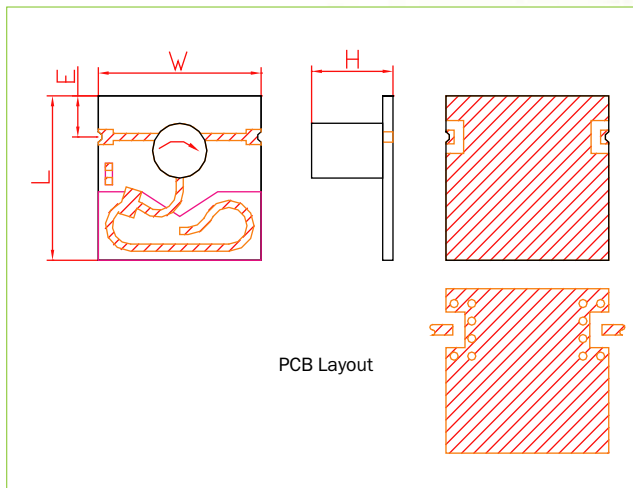


Fig. A

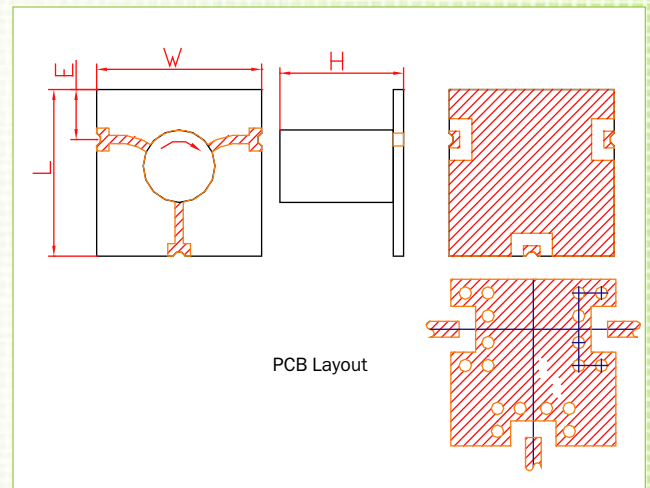


Fig B