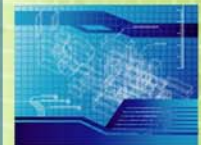




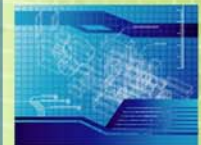
## DORADO MISSION STATEMENT:

To produce the highest quality, cost effective microwave products to meet our customers' needs with either Dorado standard catalog devices or custom products built to special or exact specifications.






# BACKGROUND

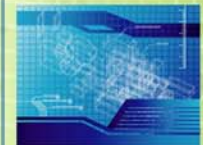
- Dorado International Corporation was established in 1979 and is a Seattle based supplier of a broad range of advanced “state of the art” components and subsystems for microwave telecommunication equipment.
- Have signed contracts with OEM suppliers in China since 1987, in Russia since 1989 and in Taiwan since 2006.
- Dorado merged with a Russian Manufacturing Company, Argus-ET in 2005.
- Have a subsidiary company that specializes in fabrication of thin film circuits located in Russia since 2005.
- Privately owned.



## DORADO INTERNATIONAL | LOCATIONS

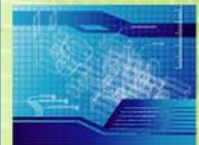
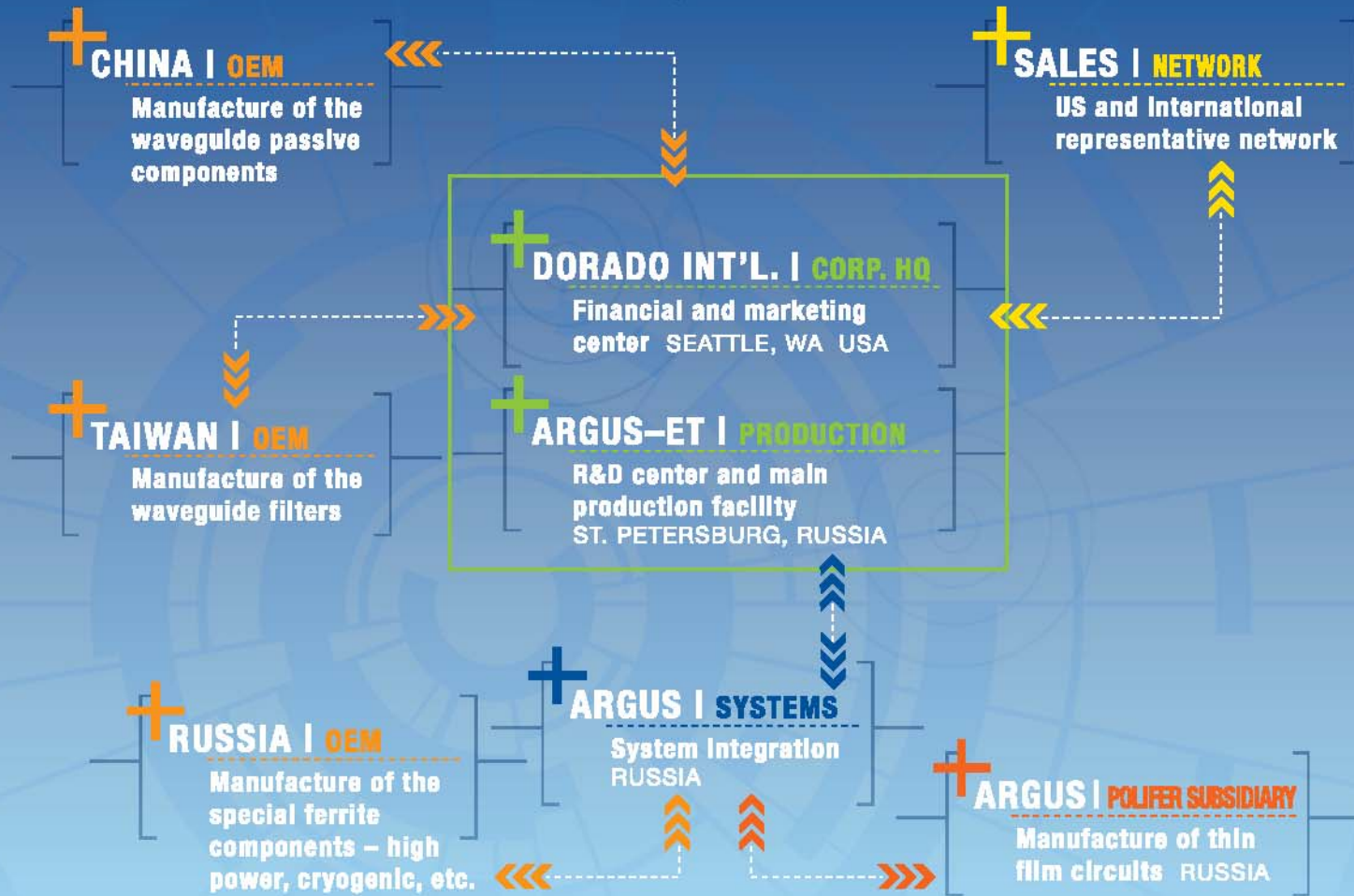


-  FACILITY LOCATIONS
-  OEM MANUFACTURERS
-  SALES REPRESENTATIVES





## DORADO INTERNATIONAL | STRUCTURE

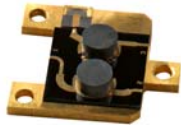


# COMPANY PROFILE

- More than 2,000 standard designs
- Manufacturing area: 10,000 sq. ft.
- Office/R&D area: 4,000 sq. ft.
- Agilent test equipment, modern simulation tools
- More than 100 employees at the major facilities



# PRODUCTS & SERVICES



## ▪ FERRITE DEVICES

Including isolators, circulators for operation in the entire frequency spectrum from 24MHz to 170GHz for coaxial, microstrip, drop-in and waveguide circuits.



## ▪ WAVEGUIDE PASSIVE COMPONENTS

That cover over 25 types of devices in each standard waveguide band from WR-90 (X-band) to WR-10 (W-band) from adapters and attenuators to tees, transitions and twists.



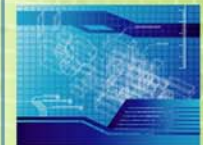
## ▪ ANTENNAS

Dorado offers a number of antenna types for use over the wide spectrum from 1.0 to 110GHz; Gain Horns (1.0 to 110GHz), Planar Array / Patch Antennas and CSC2 Sector Horn Antennas.



## ▪ CUSTOM DESIGNED SUBSYSTEMS

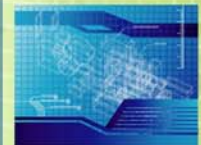
Including T/R modules, Filters with integrated amplifiers etc.





# POTENTIAL & CAPABILITY

- Growing development, production and sales engineering teams with many years of experience
- In house Ceramic Grinding shop and Thin Film printing facility provides very fast turnover time
- Significant Design and Manufacturing facilities for microwave components and subsystems
- The best level of electrical performance in high volume production runs with competitive prices



**DORADO INTERNATIONAL | MARKETS**



MILITARY



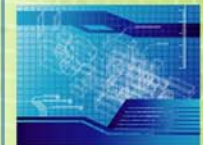
WIRELESS  
Telecommunications



LABORATORY  
Testing

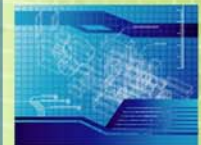
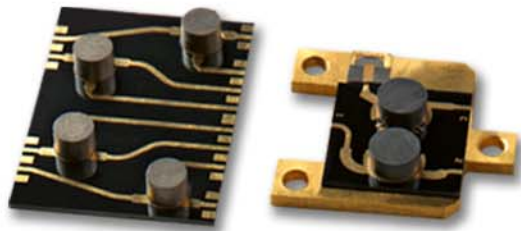


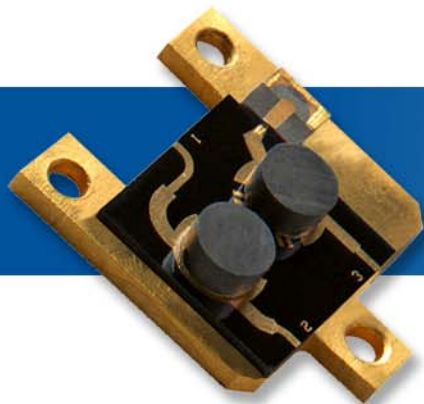
AUTOMOTIVE  
Telematics





# PRODUCT EXAMPLES





# HIGH ISOLATION MULTIPLE JUNCTION DEVICES

(Example for a typical application)

**Operating Frequencies:** 9 to 40 GHz

**Insertion Loss:**

*Antenna to Receiver =*

0.5 dB max. @ 9 GHz to 1 dB @ 40 GHz max

*Transmitter to Antenna =*

1 dB max. @ 9 GHz to 2 dB @ 40 GHz max

**Isolation:**

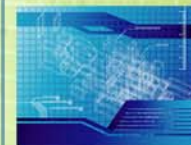
Receiver to Transmitter = 20 dB min.

Antenna to Transmitter = 33 dB min.

Receiver to Antenna = 20 dB min.

**VSWR** = 1.3 max.

**Power Handling:** 0.5 Watts



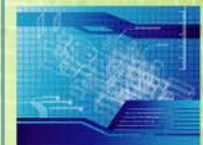


## MICROSTRIP ISOLATORS & CIRCULATORS FOR MILLIMETER WAVE FREQUENCY RANGE

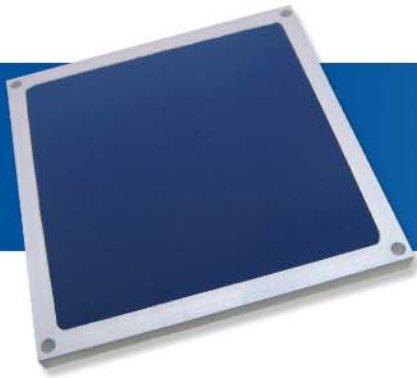
**Dorado International presents a line of high performance microstrip Isolators and Circulators for wireless telecommunications bands.**

### **FREQUENCY BANDS:**

- 3.4 – 4.2GHz
- 5.8 – 7.2GHz
- 7.1 – 8.5GHz
- 8.0 – 10.5GHz
- 12.0 – 13.5GHz
- 14.0 – 15.5GHz
- 17.7 – 19.7GHz
- 21.2 – 23.6GHz
- 24.0 – 26.0GHz
- 30.0 – 32.0GHz
- 34.0 – 36.0GHz
- 37.0 – 40.0GHz







# Ka Band Patch Antenna for Automotive Telematics

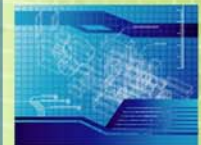
**Frequency Range:** 24 to 24.25 GHz

**Gain:** 20dB

**Sidelobe:** -19dB

**Beamwidth:** 12° x 12°

**VSWR:** 1.35





## WAVEGUIDE TO COAXIAL ADAPTERS

Dorado International offers a complete line of waveguide to coaxial adapters from WR-90 to WR-28

Available coaxial connectors: N-type, SMA, K and 2.4mm

**Model:**  
WA42-K(f)

**Frequency Range:**  
18 to 26.5 GHz

**Waveguide/Flange:**  
WR-42/UG595/U

**Coaxial Connector:**  
K(f)

**VSWR:** 1.25

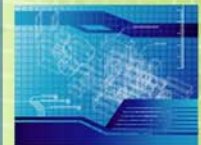
**Model:**  
WA28-2.4mm (f)

**Frequency Range:**  
26.5 to 40 GHz

**Waveguide/Flange:**  
WR-28/UG599/U

**Coaxial Connector:**  
2.4mm(f)

**VSWR:** 1.30





## SUMMARY

**Dorado International Corporation utilizes the latest technologies to realize the highest performance, the most reliable and cost effective products.**

**CENTRAL OFFICE:**

3501 Algonquin Road, Ste 230  
Rolling Meadows, IL 60008  
Phone: (888) 468-6741  
Fax: (206)574-0912  
E-mail: [sales@dorado-intl.com](mailto:sales@dorado-intl.com)

**PRODUCTION FACILITY:**

2 Blagodatnaya Street  
St. Petersburg, Russia 196128  
Phone/Fax:  
+7-812-33720699  
E-mail: [marketing@arguset.com](mailto:marketing@arguset.com)

